



BRACE *yourself*

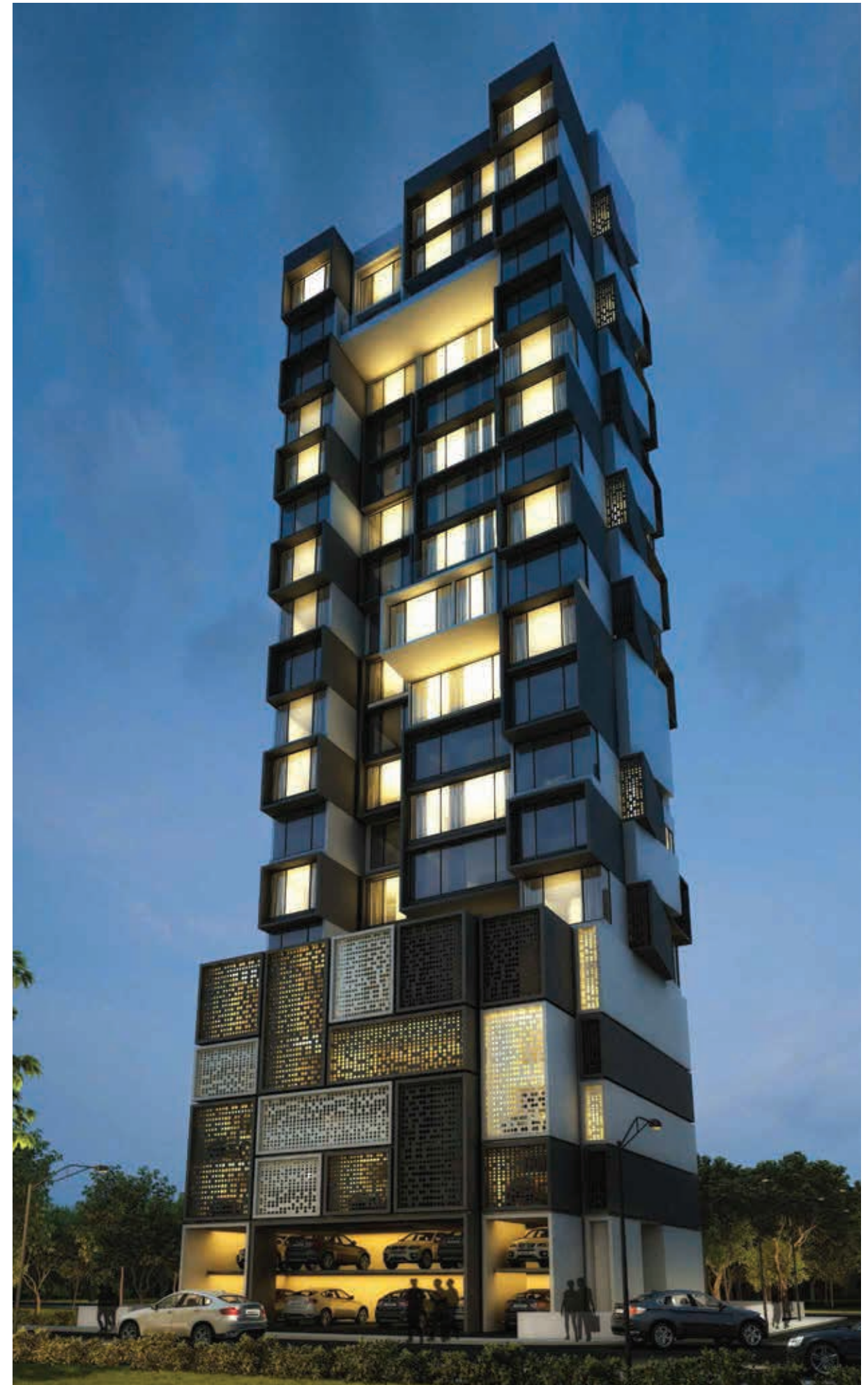


FOR A REFRESHING *change*





Standing tall in the cool and calm environs of Mantuga is Prem Girija, an awe-inspiring 19-storey elevation built by Prem Group offering state-of-the-art 2 and 4 BHK apartments. Equipped with all the comforts of life, it's an address where every aspect has been detailed in luxury. Welcome to Prem Girija, the lifestyle exclusively designed for you.



Well-designed homes with French Windows positioned to rejuvenate the joy of living in peace and harmony.

LOCATION MAP



LOCATION ADVANTAGE

- Easy connectivity to Highway & Railway Station
 - Hospital within 1 Km
 - School & colleges nearby

AMENITIES

10 FT. CLEAR HEIGHT

SECURITY:

- CCTV Surveillance
- Fire Alarm & Sprinklers in Common Areas
- Video Door Phone
- Intercom System.

CONVENIENCE:

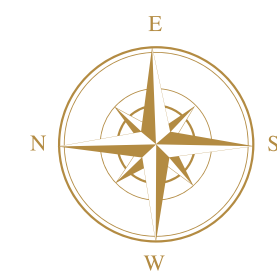
- Grand Entrance Lobby
- Branded High-speed Elevator with Infra-red Sensor Doors
- 2 High Speed Car Lifts
- Power backup for all Common Areas and Lift.

ENVIRONMENT:

- Bore well Water
- Rain Water Harvesting
- Paver Blocks in Open Areas of the Building
- Textured Exterior with Weather Shield Paint

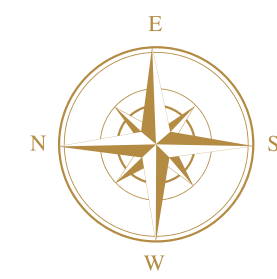
FLOOR PLAN

8th - 10th & 12th



FLOOR PLAN

8th - 10th & 12th





Designing Architect - Sanjay Puri
Consulting Architect - Planet E Consultant
Municipal Architect - S.S. Associates
Legal Advisor - G. S. Bhat
R.C. C Consultant - R.C. Tipnis

A Project by
Prem Developers



Office Address:

2, Rohini Apartments, R.R.T. Road, Mulund (West), Mumbai - 80.

Telefax: 022 2561 3766, 2564 4964, 2567 8470.

Email: pmgada@gmail.com | enquiry@premdevelopers.com. Website: www.premdevelopers.com

Site Address:

Prem Girija, Plot No. 421, Corner of Shradhanand Road & Bhau Daji Road, Matunga (East), Mumbai - 19